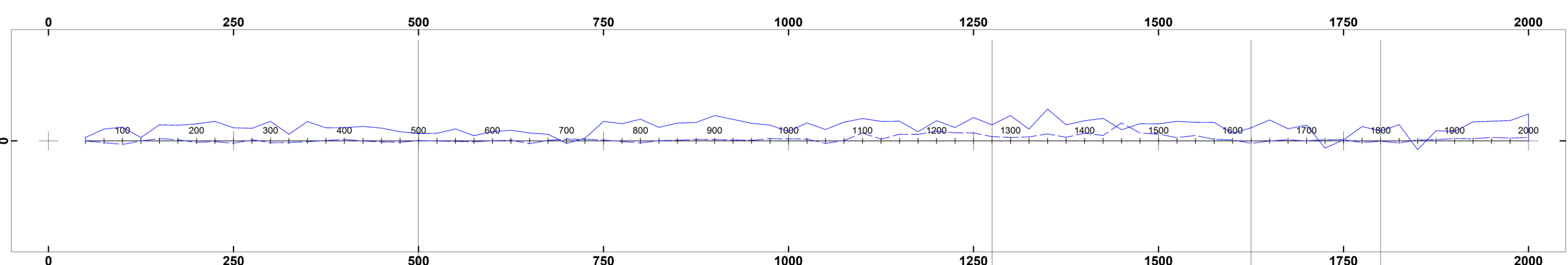
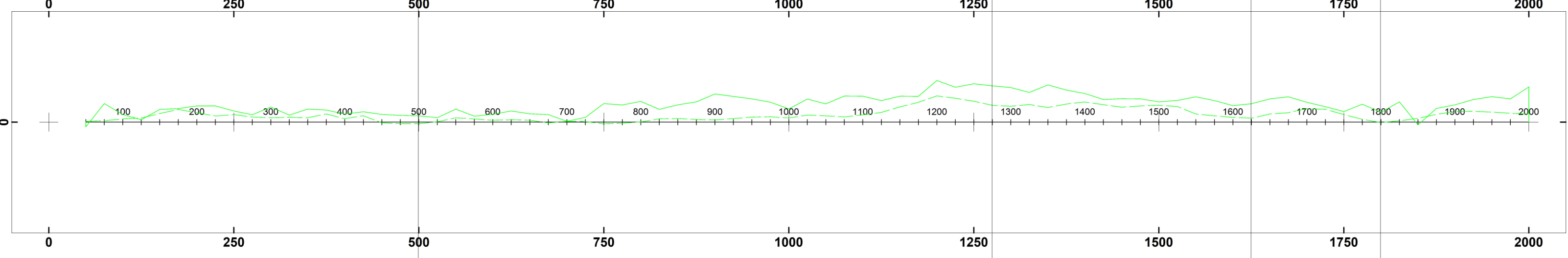


L100 COMPOSITE SECTION

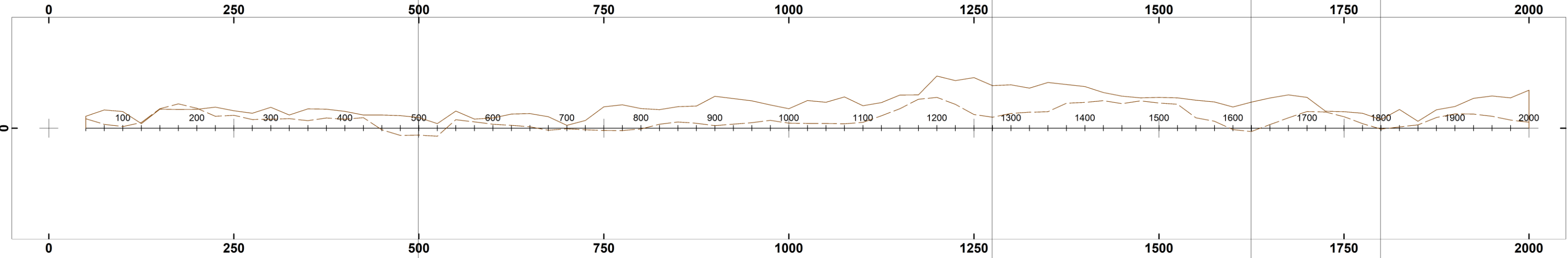
HLEM PROFILES, 220 Hz



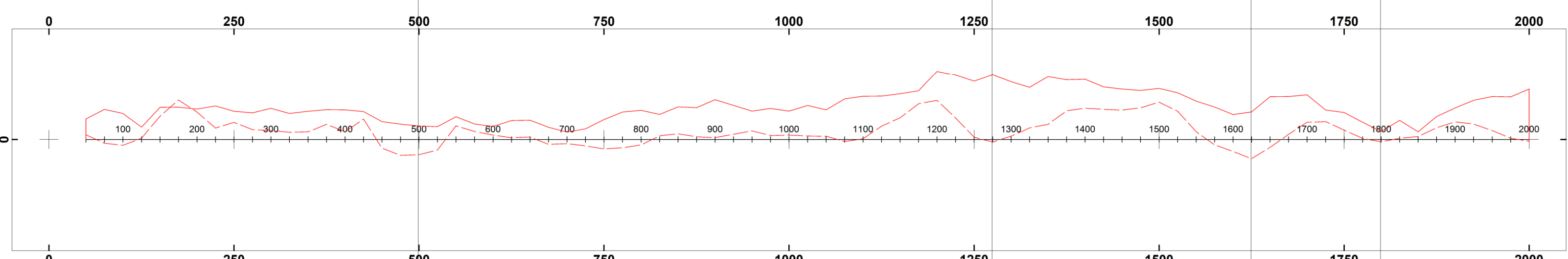
HLEM PROFILES, 1760 Hz



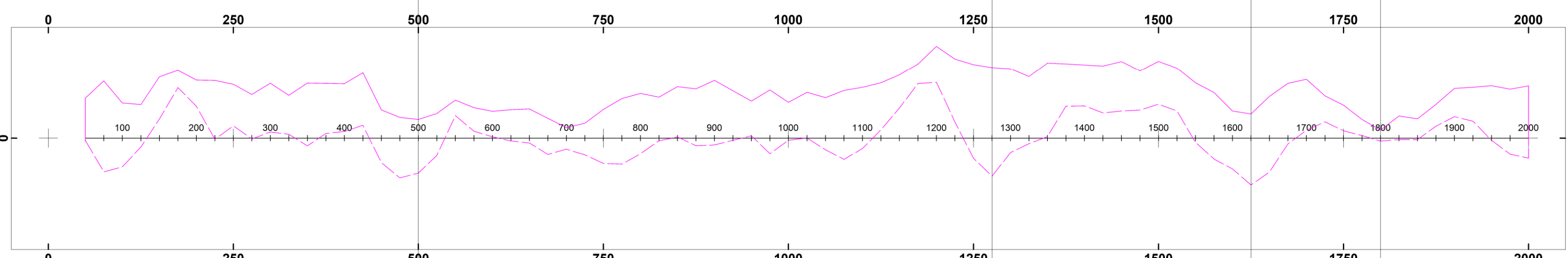
HLEM PROFILES, 3520 Hz



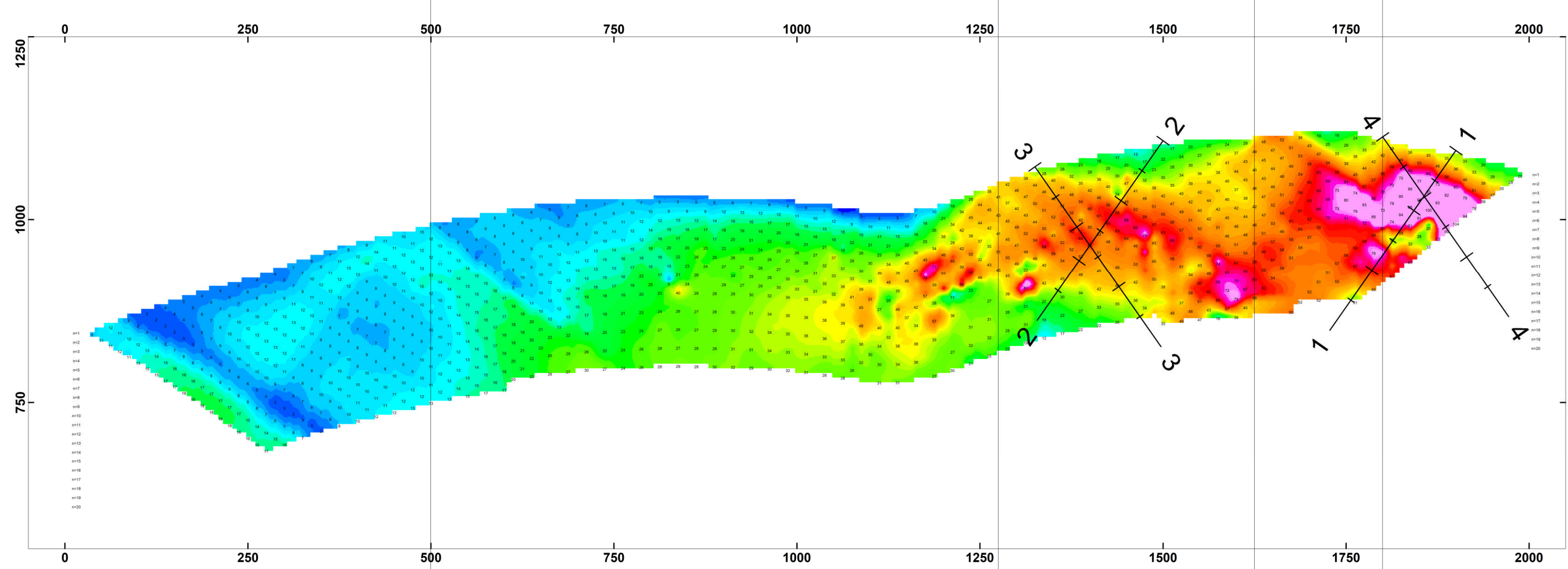
HLEM PROFILES, 7040 Hz



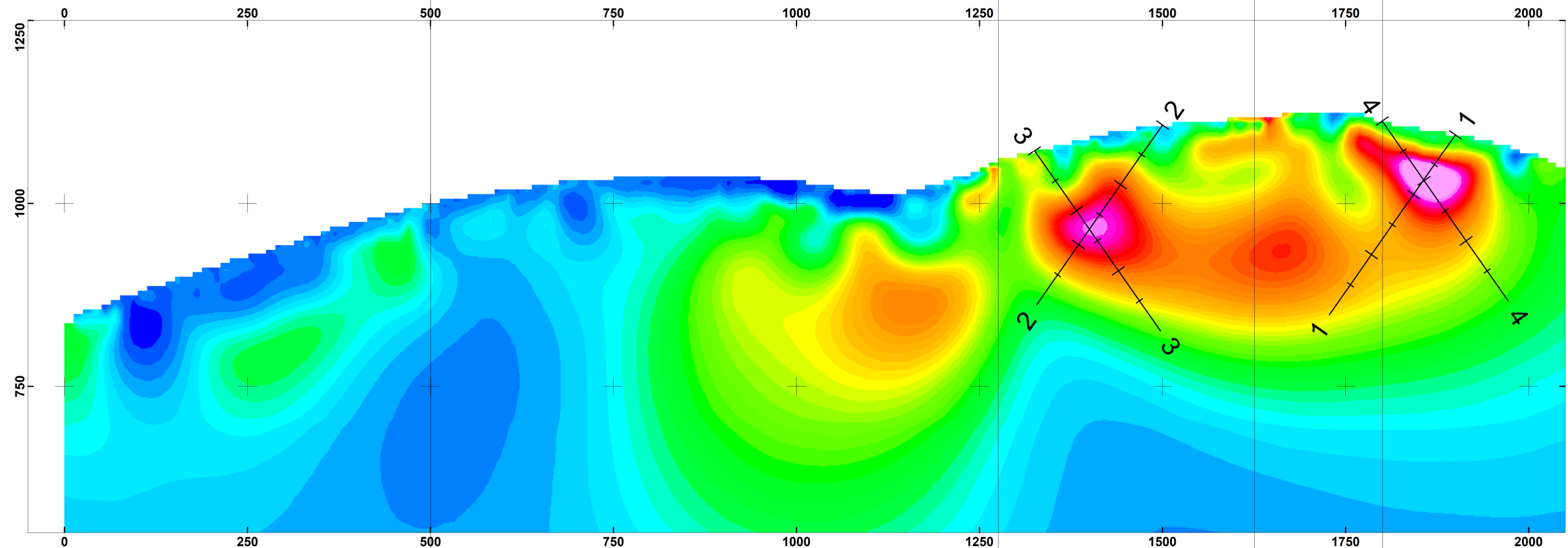
HLEM PROFILES, 14080 Hz



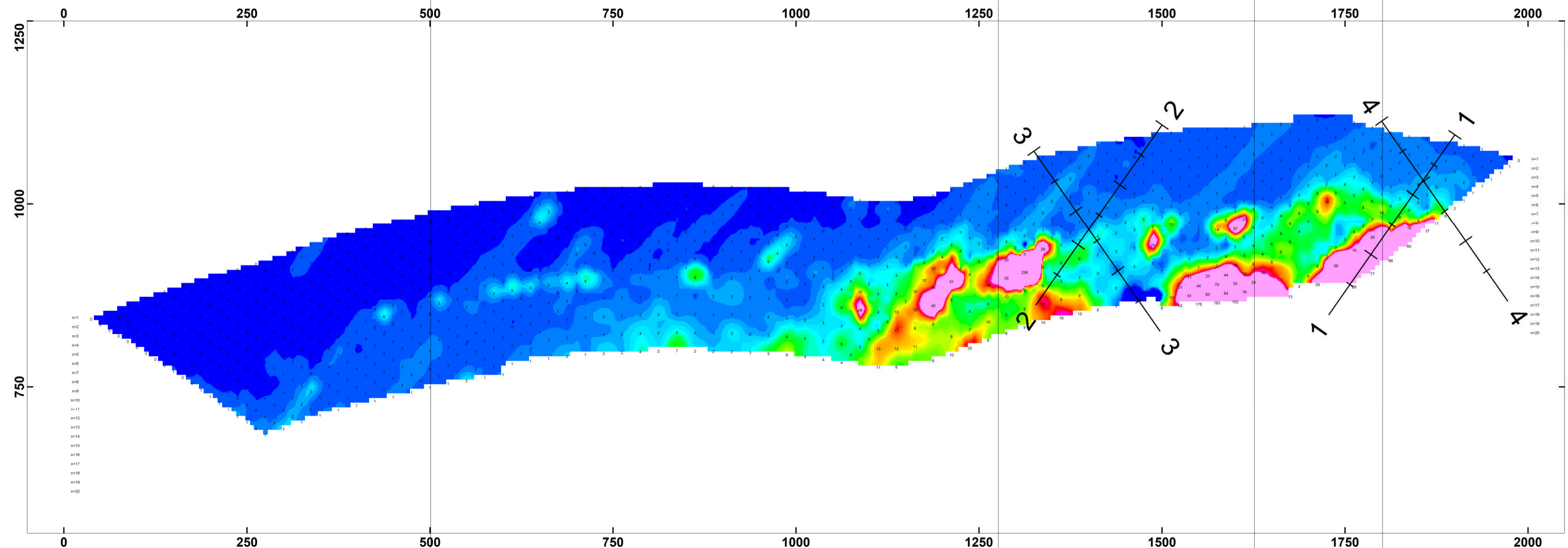
APP. CHARGEABILITY PSEUDOSECTION



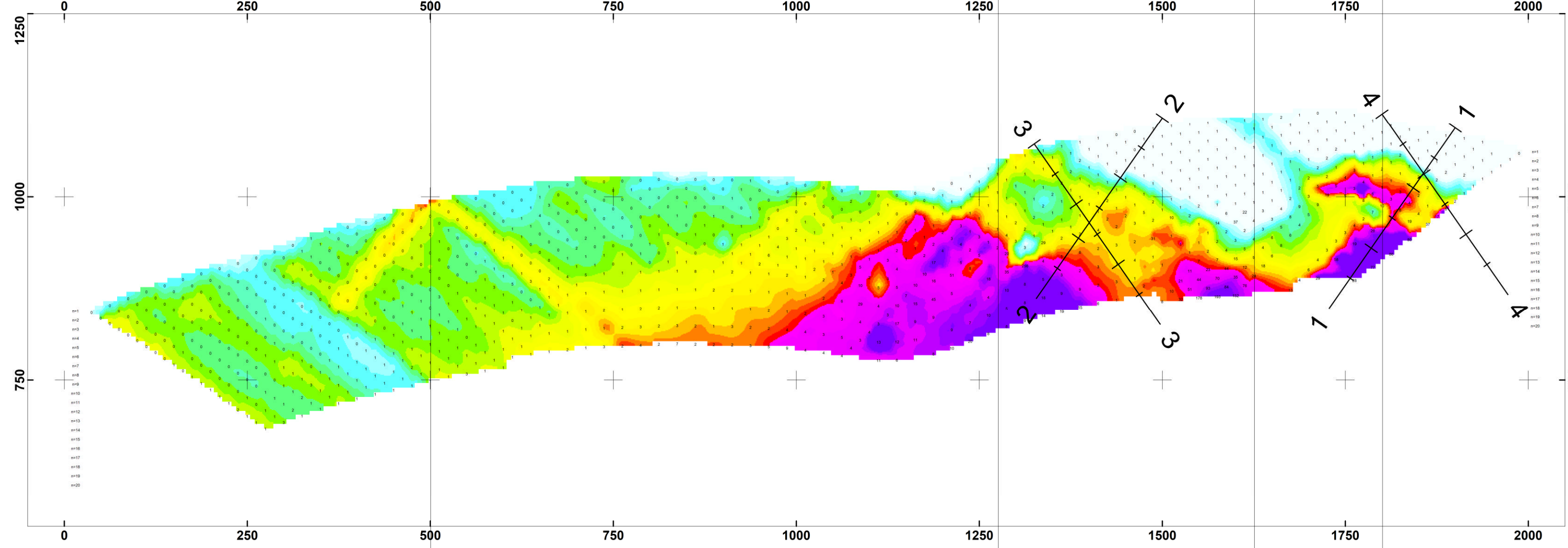
APP. CHARGEABILITY MODEL



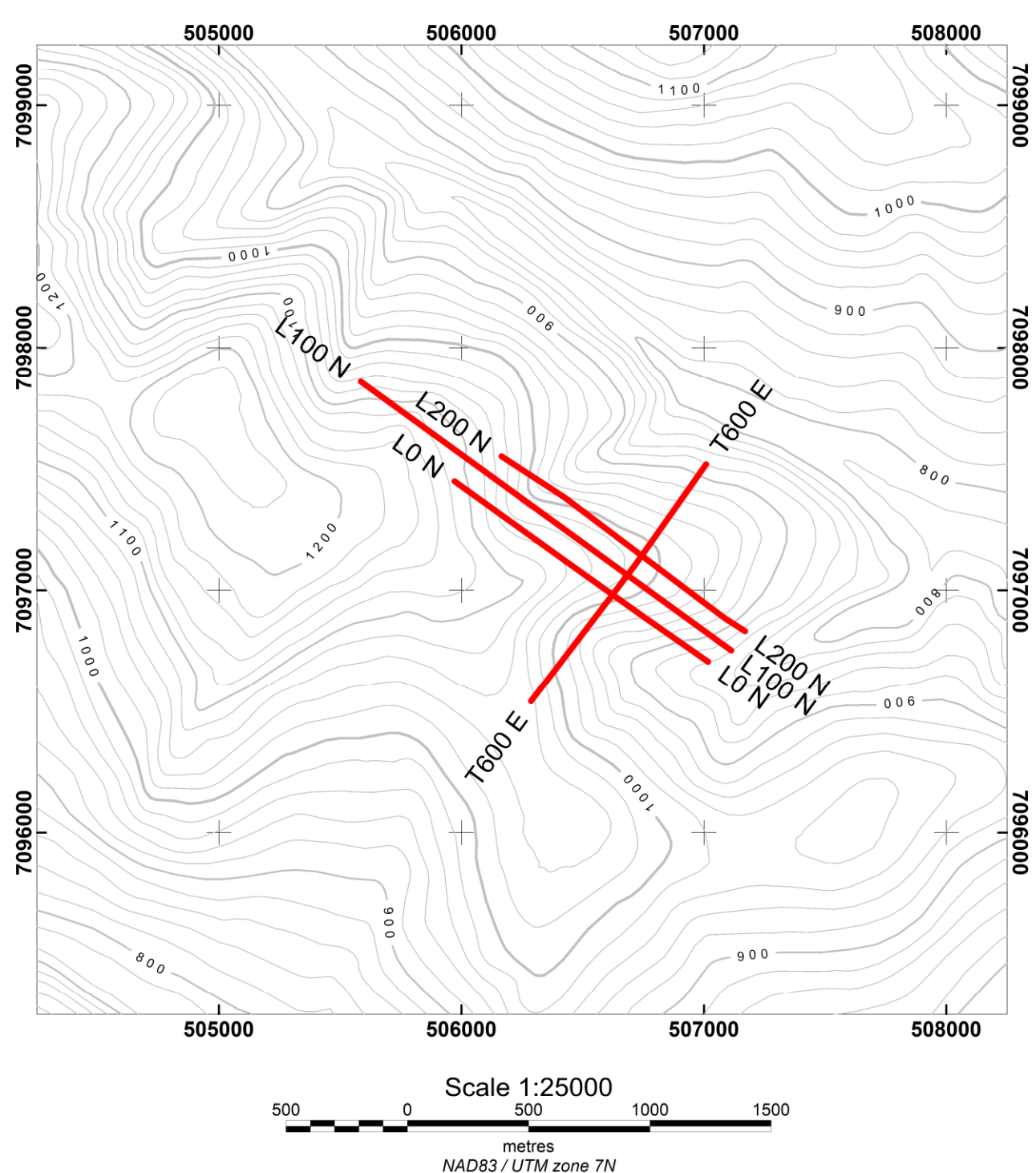
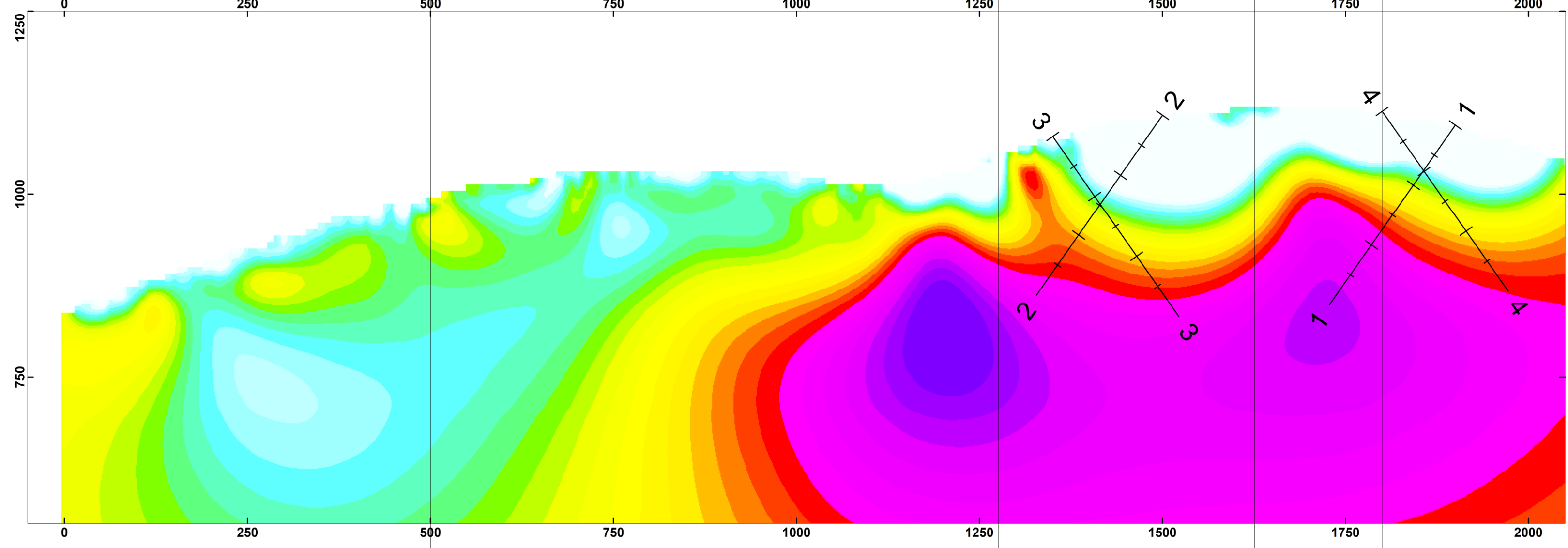
APP. CHARGEABILITY ERR. PSEUDOSECTION



APP. RESISTIVITY PSEUDOSECTION



APP. RESISTIVITY MODEL



LEGEND

HORIZONTAL LOOP EM

FREQUENCY : 220 Hz

INSTRUMENT : APEX PARAMETRICS MAX-MIN I-8

PROFILE SCALE : 1 cm = 10%

IN PHASE : COIL SEPARATION

QUADRATURE : COIL SEPARATION

DATUM : COIL SEPARATION

NORTH : COIL SEPARATION

DATUM : COIL SEPARATION

SOUTH : COIL SEPARATION

FREQUENCY : 1760 Hz

INSTRUMENT : APEX PARAMETRICS MAX-MIN I-8

PROFILE SCALE : 1 cm = 10%

IN PHASE : COIL SEPARATION

QUADRATURE : COIL SEPARATION

DATUM : COIL SEPARATION

NORTH : COIL SEPARATION

DATUM : COIL SEPARATION

SOUTH : COIL SEPARATION

FREQUENCY : 3520 Hz

INSTRUMENT : APEX PARAMETRICS MAX-MIN I-8

PROFILE SCALE : 1 cm = 10%

IN PHASE : COIL SEPARATION

QUADRATURE : COIL SEPARATION

DATUM : COIL SEPARATION

NORTH : COIL SEPARATION

DATUM : COIL SEPARATION

SOUTH : COIL SEPARATION

FREQUENCY : 7040 Hz

INSTRUMENT : APEX PARAMETRICS MAX-MIN I-8

PROFILE SCALE : 1 cm = 10%

IN PHASE : COIL SEPARATION

QUADRATURE : COIL SEPARATION

DATUM : COIL SEPARATION

NORTH : COIL SEPARATION

DATUM : COIL SEPARATION

SOUTH : COIL SEPARATION

FREQUENCY : 14080 Hz

INSTRUMENT : APEX PARAMETRICS MAX-MIN I-8

PROFILE SCALE : 1 cm = 10%

IN PHASE : COIL SEPARATION

QUADRATURE : COIL SEPARATION

DATUM : COIL SEPARATION

NORTH : COIL SEPARATION

DATUM : COIL SEPARATION

SOUTH : COIL SEPARATION

IN-PHASE DATUM : 0%

QUADRATURE DATUM : 0%

DATA FILE : KENNECOTT TRENCH HLEM.gdb

OPERATORS : AL, BS

STATION SEPARATION : 25 m

LINE-KM SURVEYED THIS SHEET : 2.00 km

Modified Pole-Dipole Array

Stationary electrode at 2500N and at 1725N (moving S).

Receiver: Iris ElecPro

Transmitter: GDD Tx-H 3.6kW

Data File: Kennecott Trench IP.xyz

Dates Surveyed : July 01 - 13, 2011

Scale 1:25000

metres

NAD83 / UTM zone 7N

Scale 1:5000

metres

Scale 1:5000

metres

Scale 1:5000

metres

Scale 1:5000

metres

Scale 1:5000

metres

Scale 1:5000

metres

Scale 1:5000

metres

Scale 1:5000

metres

Scale 1:5000

metres

Scale 1:5000

metres

Scale 1:5000

metres

Scale 1:5000

metres

Scale 1:5000

metres

Scale 1:5000

metres

Scale 1:5000

metres

Scale 1:5000

metres

Scale 1:5000

metres

Scale 1:5000

metres

Scale 1:5000

metres

Scale 1:5000

metres

Scale 1:5000

metres